

GROSSMONT HEALTHCARE DISTRICT PROP G HOSPITAL PROJECTS

MONTHLY UPDATE

JULY, 2008



Prepared by:
Program Management Team

Project Website: www.grossmonthealthcare.org

MONTHLY UPDATE
JULY 2008

TABLE OF CONTENTS

I. Executive Summary 2

ECU/CCU 2-4-5 Build Out 3

Diagnostic and Treatment Center 4

Central Plant 5

East Tower 6

Prop G Budgets 7-9

MONTHLY UPDATE

JULY, 2008

I. EXECUTIVE SUMMARY

EDU/CCU 2-4-5 Build Out

The 2-4-5 Build out project at the ED/CCU building is underway. The contractor, Jaynes Corporation, has submitted schedule updates as required as a condition for payment, however, the scheduled completion date shown is past the contractually required completion date of November 18, 2008. Jaynes has submitted a time extension request which is being evaluated by the Program Management Team. The PMT has evaluated the contractor's extension and has begun negotiations with the contractor to come to a mutually agreeable settlement of this issue. In recent weeks the contractor has made significant progress compared to prior months.

Diagnostic and Treatment Center

The Diagnostic and Treatment Center (D&T) building concept has been submitted and reviewed. The PMT has recommended Option B prepared by the architect, KMD, as the best solution for the facility. The Board has approved Option B at their meeting on February 15, 2008. First round schematic design meetings have taken place with substantial participation from the end users. Second round of end user meetings begin August 5, 2008. Geotechnical investigation has begun. Site survey and subsurface investigations are in process. Schematic Design documents are scheduled for completion on September 15, 2008.

Central Plant

The Central Plant Expansion preliminary design work is complete. The Program Management Team has evaluated options and has recommended a design option which achieves compliance with the NBBJ Master Plan objectives and allows the flexibility to solve other serious deficiencies in the existing plant. Additional funds will be required to accomplish the most cost effective final configuration described in the Engineer's Conceptual Design document.

East Tower

The PMT is in the process of completing the contract with Stantec. Beginning rounds of assessments and end user design meetings are expected to begin in August, 2008. The PMT is working on a recovery schedule to expedite the project.

Program Management Plan

The Program Management Team has initiated implementation of the Policies and Procedures previously approved by the Board. Additionally, the PMT has initiated a process improvement plan to provide metrics on team performance and to create an environment of continuous improvement.

EDU/CCU 2-4-5 BUILD OUT



REPORTING MONTH	July, 2008
JOB NUMBER:	01
PROJECT TITLE	2-4-5 Build Out
PROJECT MANAGER	Bobby Glaesner

PROJECT DESCRIPTION

The scope of this project includes the build-out of approximately 75,000 square feet on three patient care floors in the existing ED/CCU, adding a total of 90 new beds. Level 2 consists of 24 Critical Care Rooms, configured into three eight bed units called "Pods" organized around three separate nurse station areas. Level 4 & Level 5 consist of 33 Acute Care Nursing Rooms per floor arranged around two primary nurse stations located off contiguous corridors. The work includes installation of new air handlers and related equipment on a Mechanical Floor (Level 6) as well as new RO/DI (Reverse Osmosis & Deionized) water equipment in the basement of the building for use in hemodialysis. A new chiller will be installed at the exterior of the building on the site adjacent to and East of the existing helipad. In addition, several other diverse activities will be necessary on the occupied Levels EDU & CCU to accommodate the aggressive schedule, including selective demolition and concrete coring. Disruption to the standard operating procedures of the hospital will be minimized during construction of this project through logistically phased scheduling while at all times adhering to stringent Fire, Life Safety procedures and OSHPD constraints.

CURRENT STATUS

From November 2007 thru May 2008 the project moved decidedly slower than the approved baseline schedule. Currently the progress is approximately 120± calendar days behind the contract schedule for completion. The following is representative of the progress through July 31, 2008: Level 1 shutdowns 40% complete, Level 2 activities 45% +/- complete, Level 4 activities 55% +/- complete, Level 5 activities 75% +/- complete and level 6 activities 60% +/- complete with an aggregate total of 54% +/- overall completion. This equates to a 6% increase in production monthly.

KEY ACTIVITIES/NEXT STEPS

Several key activities for August:

- Grading and installation of a new chiller pad with added rerouting of emergency generator backup fuel lines.
- Continue phased shut downs of Level 1 CCU pods, over-ceiling inspections and complete drywall on Level 5.
- Completion of framing on Level 2 and 4, install Ardex and top-down drywall; MEP anchorage at Levels 2, and 4.
- Rough mechanical, electrical and plumbing (MEP) installation on Levels 2, 4, 5 and 6 (Mechanical Level).
- Complete rough-in of cabling for door security, CCTV and Tel-Data on all Levels.

ISSUES

Jaynes Corporation has added a Quality Control Manager per the contract requirements and is currently reviewing the documents relating to scheduling, sequencing, commissioning and quality control. The addition of a QC Manager will help to insure that proper procedures are followed for TIO, decrease the need for re-inspections, and increase the ability for timely submittal of schedules and weekly look aheads. Weekly schedule meetings are currently being held.

SCHEDULING INFORMATION

SCHEDULED COMPLETION	NOVEMBER 18, 2008
PROJECT NEEDS ASSESSMENT:	N/A
PROJECT FEASIBILITY:	N/A
PROJECT PROGRAM	N/A
DESIGN	3-1-07
CONSTRUCTION BID & AWARD	BID 6-13-07, AWARD 8-10-07
CONSTRUCTION	NOTICE TO PROCEED 11-19-07

COST INFORMATION

CONSTRUCTION:	\$33,120,000.00
EQUIPMENT:	\$2,183,586.00
PLANS & SPECIFICATION:	\$0
A/E FEES:	\$1,949,435.00
PLAN CHECK:	\$0
ADMIN FEES	\$3,840,522.00
ADDITIONAL CONTINGENCIES	\$0

TOTAL

\$41,093,543.00

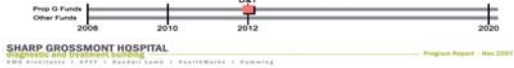
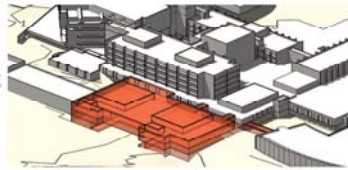
DIAGNOSTIC AND TREATMENT CENTER

Conceptual Planning

Option B Summary

New D & T Platform for 2012

This is similar to the original option shown in early planning meetings during the Pre-Design phase. All programmatic spaces required in the project fit within the planning option. It does reserve for future growth on the surgery department and not growth on other levels. The future growth will need to be provided for in a future project and building.



REPORTING MONTH
JOB NUMBER:
PROJECT TITLE
PROJECT MANAGER

July, 2008
02
Diagnostic and Treatment Center
Drake Dillard

PROJECT DESCRIPTION

The Diagnostic and Treatment scope is to provide up to nine new multipurpose procedural rooms with the flexibility to support a wide range of specialties, including general surgery, minimally invasive surgery, image guided surgery, catheterization procedures, as well as endovascular interventional procedures. As a secondary objective, the new addition will allow for the relocation of the main hospital pharmacy and the clinical laboratory to meet current seismic criteria. Food Services Relocation – this proposed renovation project relocates the tray line and dishwashing equipment, in the event the HAZUS reclassification of the existing kitchen area is unsuccessful.

CURRENT STATUS

- Phase I: Program and conceptual planning for the Diagnostic and Treatment Building was completed on February 2008. Option B was selected by staff. This includes new construction, and renovations. The total estimated cost for Option B is \$56,009,600. (Jan. 2012 dollars, mid-point of construction). GSF 73,767.
- Phase II: Schematic Design is underway. KMD completed their first round of design review meetings with: Surgery, PACU, Pre-Op and Recovery, Lab, Pharmacy, materials Management, EVS, Food Service and IT. Planning Update:
- There is concern regarding the relocation of the Blood Bank.
 - Pharmacy will use the secondary entry at Level A planned for SNFF patient pickup for deliveries that pharmacists must sign off on.
 - Materials Management, Food Services and EVS – the biggest impact will be the interim plan for the docks and food service dock.
 - Increased storage needs for both EVS and Material management

KEY ACTIVITIES/NEXT STEPS

Existing equipment inventory by Criterion/Korbel scheduled for the end of month.
KMD will present exterior design concepts at next Executive Team meeting.

ISSUES

Previous discussion regarding the proposed "interim Level A Cath Lab" were that recovery would occur on Level A. Peggy Gaul mentioned that these patients might be recovered on the surgery level. The current Prep/Level 2 recovery area is not sized to accommodate the volume from an additional Cath Lab when all rooms are built out. SGH to determine what storage needs for medical records will be by the time the D & T project is complete in 2013.

SCHEDULING INFORMATION

SCHEDULED COMPLETION	MAY 2013
PROJECT FEASIBILITY:	MAY 2007–JUNE 2007
PROJECT PROGRAM	JUNE 2007–MAY 2008
DESIGN	JUNE 2008–JUNE 2009
CONSTRUCTION BID & AWARD	AUGUST 2010–DECEMBER 2010
CONSTRUCTION	DECEMBER 2010–APRIL 2013

COST INFORMATION

CONSTRUCTION:	\$72,617,693.00
EQUIPMENT:	\$18,119,860.00
PLANS & SPECIFICATION:	\$0
A/E FEES:	\$9,575,978.00
PLAN CHECK:	\$0
ADMIN FEES	\$6,104,092.00
DIETARY UPGRADES	\$4,000,000.00

TOTAL \$110,417,623.00

CENTRAL PLANT



REPORTING MONTH: July, 2008
JOB NUMBER: 03
PROJECT TITLE: Central Plant
PROJECT MANAGER: Drake Dillard

PROJECT DESCRIPTION

Modernization and expansion of the Central Utility Plant.

Expansion support for the following:

- Diagnostic and Treatment Addition,
- Four floors of the existing east tower, and
- Future tower expansion.

CURRENT STATUS

Project consultant Syska Hennessy contract was approved by the Board for the Phase I: Concept Study. Phase One includes: Strategic Assessment, Existing Conditions Assessment, Concept Development and Concept Evaluation. Conceptual Study is complete.

The Conceptual Study includes three central plant options:

Option One: New central plant adjoining the existing central plant.

Option Two: A new free standing central plant located between the existing helipad and parking structure to the south.

Option Three: Another free standing central plant located in the hillside/surface parking lot to the North of the existing central plant across the ring road from the Women's Center.

Staff recommended Option 2 at the 8/04/08 Special Board Meeting.

KEY ACTIVITIES/NEXT STEPS

Staff will present the recommendation to the Board at the August 15th 2008 meeting.

ISSUES

Scope and Cost in compliance with the 2004 NBBJ Masterplan.

SCHEDULING INFORMATION

SCHEDULED COMPLETION	DECEMBER 2012
PROJECT FEASIBILITY:	JANUARY 2008-MARCH 2008
PROJECT PROGRAM	MARCH 2008-AUGUST 2008
DESIGN	AUGUST 2008-NOVEMBER 2008
CONSTRUCTION BID & AWARD	JULY 2010-NOVEMBER 2010
CONSTRUCTION	NOVEMBER 2010-NOVEMBER 2012

COST INFORMATION

CONSTRUCTION:	\$45,613,638.00
EQUIPMENT:	\$0
PLANS & SPECIFICATION:	\$0
A/E FEES:	\$7,024,450.00
PLAN CHECK:	\$0
ADMIN FEES	\$4,280,685.00
ADDITIONAL CONTINGENCIES	\$0

TOTAL \$56,918,773.00

EAST TOWER



REPORTING MONTH: July, 2008
JOB NUMBER: 04
PROJECT TITLE: East Tower
PROJECT MANAGER: Drake Dillard

PROJECT DESCRIPTION

The existing levels 2, 3, 4, and 5 are the focus of this project. Major components of the work at each level include the replacement of patient utility management head-walls and the conversion of four semi-private patient rooms into four ADA compliant private rooms. The infrastructure portion of this project involve mechanical, electrical, and plumbing (MEP) upgrades as well as modernization of existing elevator cars and controls. The entire nursing unit at each level, including entry corridors and elevator lobbies will receive upgraded lighting and finishes.

CURRENT STATUS

Board approved contract with Stantec for the Phase I on 7/15/08.

Phase I will include: Program/Scope Definition.

Tasks of effort will include: Existing Conditions Analysis, Programming and Concepts Preparation, Site Visits, User Group Meetings, Room and Unit Concepts/Phasing/Recommendations/Final Report.

An agreement is being prepared for Stantec and work will begin in late August.

KEY ACTIVITIES/NEXT STEPS

Schedule Design meetings with end-users.

ISSUES

Schedule recovery as a result of change in design firms.

SCHEDULING INFORMATION

SCHEDULED COMPLETION: AUGUST 2012
PROJECT FEASIBILITY: OCTOBER 2007-FEBRUARY 2008
PROJECT PROGRAM: FEBRUARY 2008-JULY 2008
DESIGN: JULY 2008-JULY 2009
BID & AWARD: MAY 2010-SEPTEMBER 2010
CONSTRUCTION: SEPTEMBER 2010-JULY 2012

COST INFORMATION

CONSTRUCTION: \$27,590,017.00
EQUIPMENT: \$0
PLANS & SPECIFICATION: \$0
A/E FEES: \$4,386,778.00
PLAN CHECK: \$0
ADMIN FEES \$2,355,008.00
ADDITIONAL CONTINGENCIES \$0

TOTAL \$34,331,803.00

Grossmont Healthcare District
Prop G - Costs/Budgets by Project Category

As of July 31, 2008

	Actual Spent	Budget	Variance to Budget	\$ Remaining	% Budget Used
ED-CCU					
51100 A/E	\$1,494,021	\$1,949,435	-\$455,414	\$455,414	77%
53000 CONSTRUCTION	15,089,191	33,120,000	-18,030,809	22,024,717	45%
54000 EQUIPMENT	0	2,183,586	-2,183,586	2,183,586	0%
61000 ADMIN COSTS	1,924,546	3,840,522	-1,915,976	1,915,976	50%
Total Expenses	18,507,758	41,093,543	-22,585,785	26,579,693	45%
Central Plant					
51100 A/E	255,906	7,024,450	-6,768,544	6,768,544	4%
53000 CONSTRUCTION	0	45,613,638	-45,613,638	45,613,638	0%
61000 ADMIN COSTS	91,100	4,280,685	-4,189,585	4,189,585	2%
Total Expenses	347,006	56,918,773	-56,571,767	56,571,767	1%
Diagnostic & Treatment					
51100 A/E	674,068	9,575,978	-8,901,910	8,901,910	7%
53000 CONSTRUCTION	0	72,617,693	-72,617,693	72,617,693	0%
54000 EQUIPMENT	0	18,119,860	-18,119,860	18,119,860	0%
61000 ADMIN COSTS	179,025	6,104,092	-5,925,067	5,925,067	3%
62000 KITCHEN CONTING	0	4,000,000	-4,000,000	4,000,000	0%
Total Expenses	853,093	110,417,623	-109,564,530	109,564,530	1%
East Tower					
51100 A/E	0	4,386,778	-4,386,778	4,386,778	0%
53000 CONSTRUCTION	0	27,590,017	-27,590,017	27,590,017	0%
61000 ADMIN COSTS	56,098	2,355,008	-2,298,910	2,298,910	2%
Total Expenses	56,098	34,331,803	-34,275,705	34,275,705	0%
Project Total	\$19,763,954	\$242,761,742	-\$222,997,788	\$226,991,695	8%

Grossmont Healthcare District
Prop G - Contracts Summary by Project

As of July 31, 2008

Project	Contract Name	Original Contract Amount	Change Order Amount	Current Contract Amount
Central Energy Plant	Parsons 444313	\$216,289	\$0	\$216,289
	Syska Hennessey	263,500	0	263,500
Subtotal		\$479,789	\$0	\$479,789
Diagnostic & Treatment	KMD Design	\$6,120,000	\$0	\$6,120,000
	KMD Design Reimb	200,000	0	200,000
	KMD Pre-Design	668,241	0	668,241
	Parsons 444313	424,853	0	424,853
	SCST	13,250	0	13,250
Subtotal		\$7,426,344	\$0	\$7,426,344
ED-CCU Levels 2,4,5	Design Partnership	\$1,005,760	\$107,034	\$1,112,794
	Jaynes	27,350,000	1,200,212	28,550,212
	Kleinfelder	250,000	82,650	332,650
	Parsons 444031	4,800	0	4,800
	Parsons 444038	25,000	0	25,000
	Parsons 444313-484	1,170,978	0	1,170,978
	SCST	192,182	0	192,182
	Sharp Reimb	1,484,219	0	1,484,219
	TestMarcx	192,174	0	192,174
Subtotal		\$31,675,113	\$1,389,896	\$33,065,009
East Tower	Parsons 444313	\$131,318	\$0	\$131,318
Grand Total		\$39,712,564	\$1,389,896	\$41,102,460

Grossmont Healthcare District
Prop G - ED/CCU Contractor Change Orders

As of July 31, 2008

CO-Owner Ref #	CO Date	CO Type	CO-Description	CO-Executed Amount
1	9/24/2007	B/C	Contract Addendum Item#3	\$195,866
2	10/3/2007	B/C	Provide 3D MEP Coordination Drawings	99,753
3	3/10/2008	A	OSHPD Change Order #1, incorporate Backcheck 1	175,494
4	4/18/2008	A	OSHPD CO#01 drawings	2,000
5	4/18/2008	D	Deletion of K-12 Lite Fixtures	(4,775)
6	2/21/2008	A	specification changes for OSHPD approvals	0
7	2/19/2008	A	Incorporate Geotechnical Investigation for Retaining	0
8	3/19/2008	C	Headwall Revisions	81,413
9	4/8/2008	A	Revisions to Backcheck#1 and #2 Fire Alarm.	31,157
10	4/15/2008	D	Replace J4 light fixture with J1.	1,769
11	4/18/2008	D	Change Type B3 and K2 Light fixtures	1,909
12	4/18/2008	D	Level 5 relocation of plumbing riser	4,214
13	5/2/2008	C	(1) Day Shut Down -Infectious Control	4,311
14	5/7/2008	F	Relocate of existing duct	11,397
15	5/7/2008	C	Enlarge conference room, delete wall paneling	(13,594)
16	5/8/2008	F	Add locks, scribe counters per casework submittal	7,154
17	5/8/2008	A	Incorporate OSHPD approved Pneumatic Tube	0
18	5/8/2008	A	Provide HILTI X-DNI (0.145" diameter) x 1-1/14"	0
19	5/13/2008	A	OSHPD Backcheck #02 - RFQ# 03	8,000
20	5/13/2008	F	Relocate Fire Sprinkler lines	20,200
21	5/13/2008	A	OSHPD Change Order #04-Delta #11 revisions	(3,200)
22	5/13/2008	F	Add plumbing connection detail back into drawings.	0
23	5/13/2008	C	Wall Panel System Revisions	(58,900)
24	5/20/2008	A	Incorporate Fire Alarm Backcheck revisions	12,003
25	5/20/2008	F	RFI's #52,60,74,77, 78, 97,98,99 and 126	13,365
26	5/20/2008	E	Provide exploratory excavation at the Chiller Pad	13,279
27	5/20/2008	F	Work identified in RFQ#22, noted in OCO#14,	23,556
28	5/28/2008	B/C	Bid Add Alternate #2-Support for Owner hired Comm	50,572
29	5/28/2008	C	Add Sink in Rm 2511	17,051
30	5/28/2008	A	Operable window (at Type K doors)	76,867
31	6/12/2008	C	Infection Control	8,714
32	6/12/2008	F	Various RFI's	28,290
33	6/12/2008	F	Revision to Won Door Pocket Corridor Width Zero Cost	0
34	6/12/2008	F	Revision to counter mounting heights-Zero Cost	0
35	6/12/2008	C	Marlite Connections-wall panel systems-Zero Cost	0
36	6/19/2008	A	Additional steel beams	22,000
37	6/19/2008	F	Change the ICU Sliding doors	20,393
38	6/19/2008	C	Change floor finish	3,180
39	6/19/2008	F	Change cable tray size	2,160
40	6/19/2008	F	RFI's 441,456,458,460	(5,089)
41	6/19/2008	F	Electrical changes	3,309
42	6/20/2008	F	Demo to relocate existing duct	2,401
43	6/19/2008	C	Incorporate updated equip drawings	72,193
44	6/20/2008	A	OSHPD CO#10-MEP Equip Coord drwgs	87,036
45	7/15/2008	A/F	Various RFI's (23 total) ASI (3 total)	170,000
46	7/15/2008	C	Credit for 2" conduit to the Roof	(1,076)
47	7/15/2008	F	Incorporate 'not used' rated wall detail-zero cost	0
48	7/29/2008	D	Relocate plmg line in elect room 5510	2,500
49	7/29/2008	F	Credit for 3 outlets, chgs to furr wall, relocate plmbg	13,340
TOTAL				\$1,200,212

Type of Change	CO Amount	% of CO	% of Contract
A=OSHPD	\$496,357	41%	
B=District Request	173,095	14%	
C=Sharp Request	286,388	24%	
D=Unforeseen	5,617	0%	
E=GC Request	13,279	1%	
F=A&E Revisions	225,479	19%	
Total	\$1,200,215	100%	4.00%

Grossmont Healthcare District
Prop G - Summary of Budgets-Contracts-Paid

As of July 31, 2008

Project	Current Budget Amount	Original Budget Amount	Original Contract Amount	Executed Changes Amt	Current Contract Amt	Paid to Date Amount
Central Energy Plant	\$56,918,773	\$56,918,773	\$479,789	\$0	\$479,789	\$337,200
Diagnostic and Treatment Building	110,417,623	110,417,623	7,426,344	0	7,426,344	828,224
ED/CCU Levels 2, 4 and 5 Build Out	41,093,543	41,093,543	31,675,113	1,389,896	33,065,009	13,234,391
East Tower Nursing Unit Upgrade	34,331,803	34,331,803	131,318	0	131,318	50,131
TOTALS	\$242,761,742	\$242,761,742	\$39,712,564	\$1,389,896	\$41,102,460	\$14,449,946